



Llywodraeth Cymru
Welsh Government

Welsh Government

Net Zero Wales Carbon Budget 2 (2021-25)

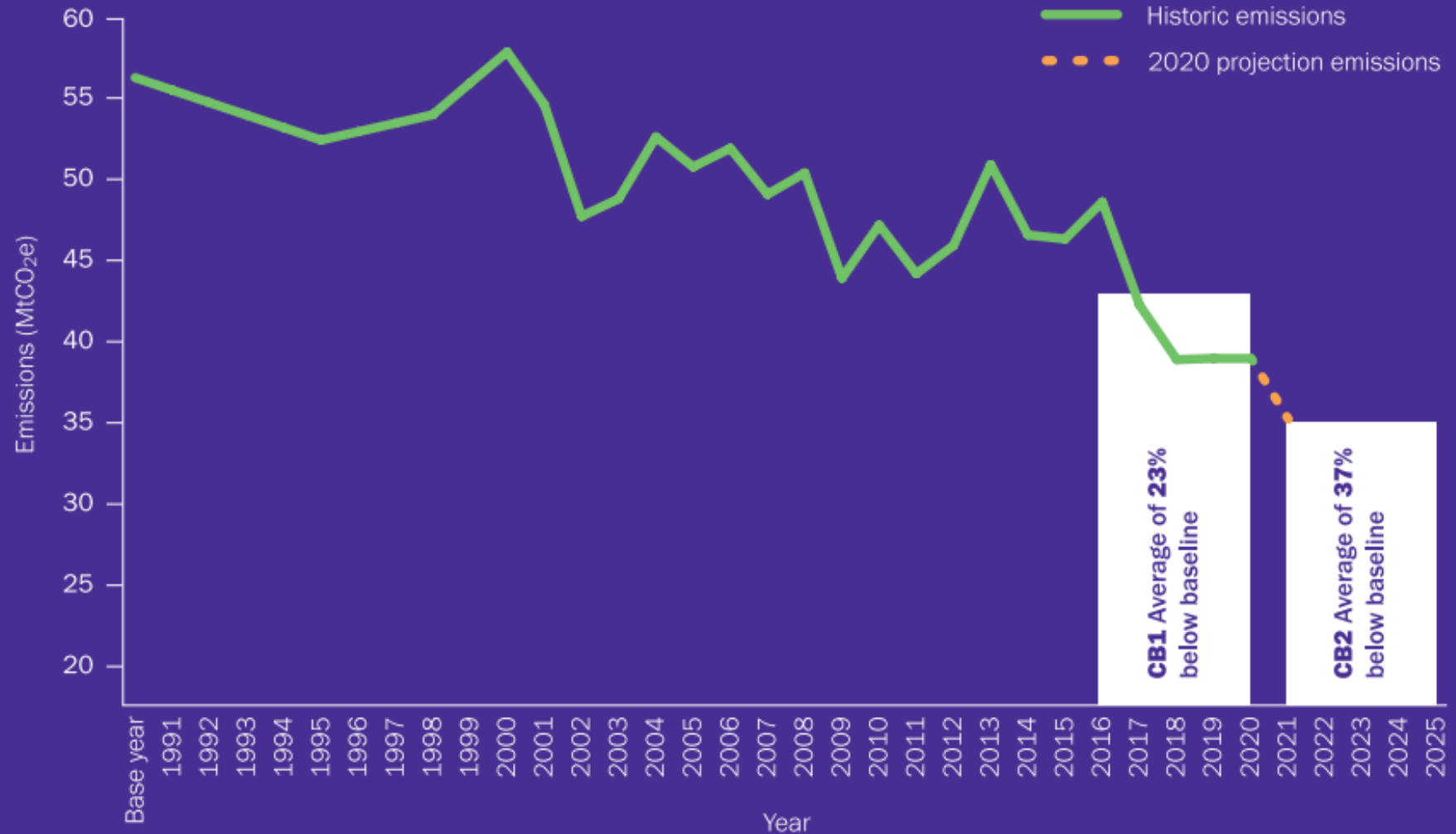
Robin Beckmann

Head of Transport Environment and Climate Change
Welsh Government



Our Pathway to Net Zero

Total Welsh emissions - historic data, future targets & budgets





Llywodraeth Cymru
Welsh Government

Llwybr Newydd

The Wales Transport Strategy 2021

OUR VISION

An accessible, sustainable and efficient transport system

Priority 1

Bring services to people in order to reduce the need to travel

Priority 2

Allow people and goods to move easily from door to door by accessible, sustainable transport

Priority 3

Encourage people to make the change to more sustainable transport

WELL BEING AMBITIONS

Good for people and communities

Good for the environment

Good for places and the economy

Good for culture and the Welsh language

Figure 9: Graph – Transport sector emissions in 2019 (MtCO₂e)⁵²

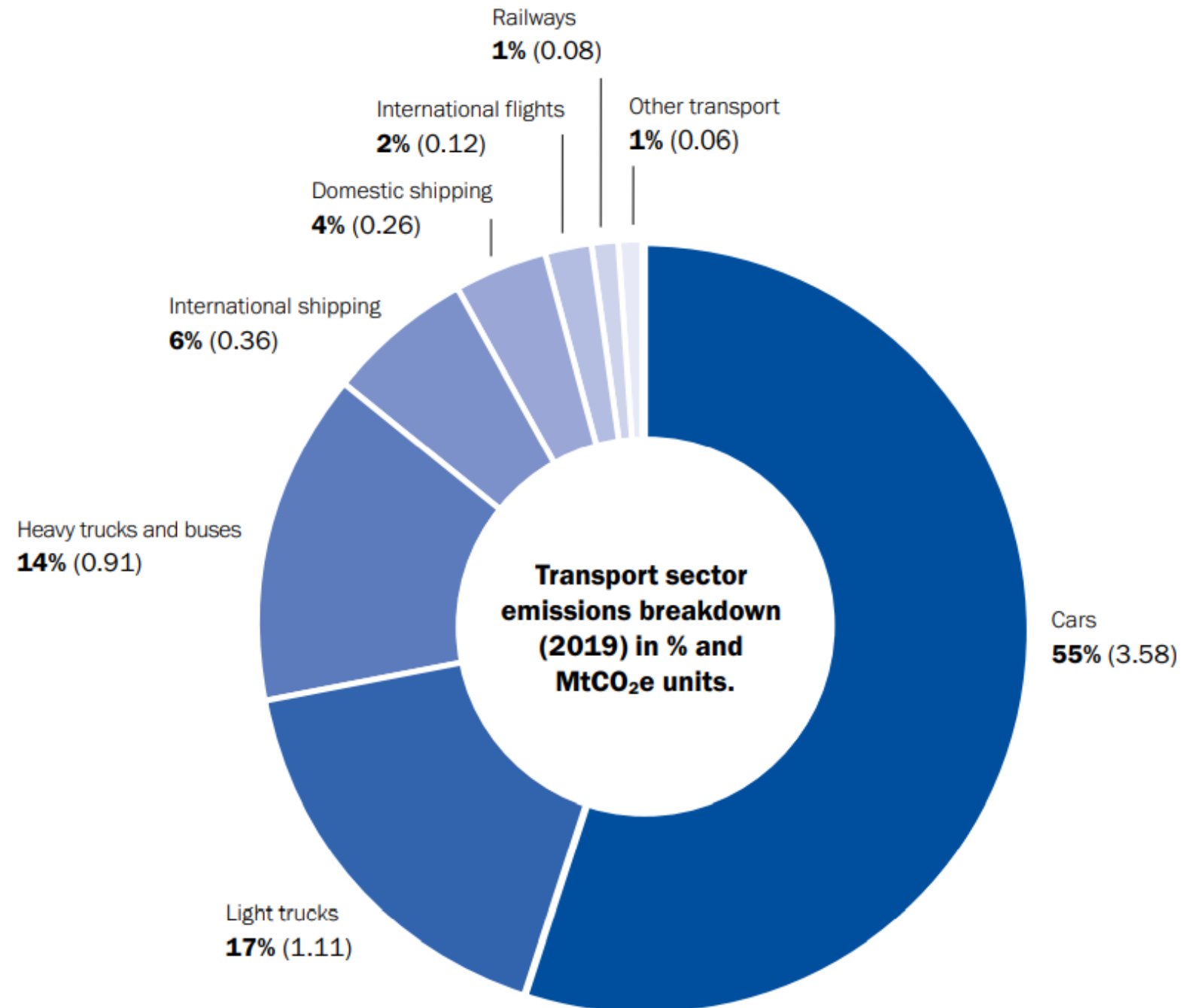
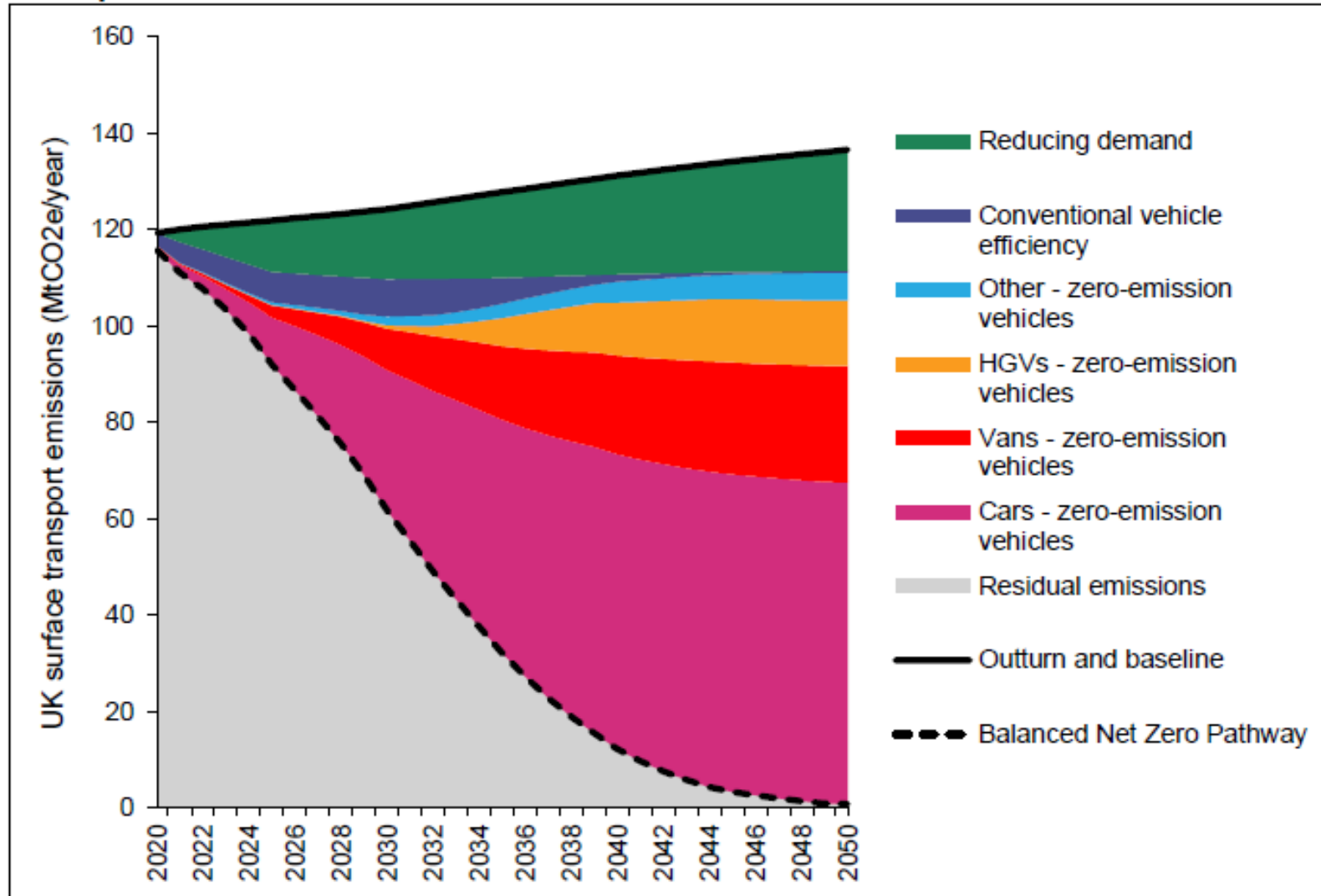
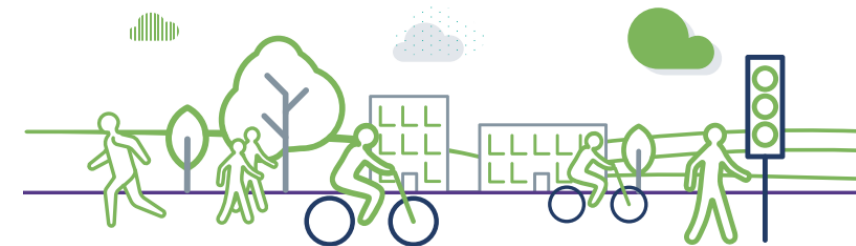


Figure 4: Sources of abatement in the Balanced Net Zero Pathway for the surface transport sector in the UK



Source: Figure 3.1.a from CCC Sixth Carbon Budget



Transport Sector Ambition Statement

- We aim to reduce emissions from passenger transport by 22% in 2025 (from 2019) and 98% in 2050 through demand reduction, modal shift and the uptake of low carbon technologies.
- Our aim is to reduce the number of car miles travelled per person by 10% by 2030 and to increase the proportion of trips by sustainable travel mode (public transport and active travel) to 35% by 2025 and 39% by 2030.
- By 2025 10% of passenger travel will be by zero emission car and 48% of new car sales will be zero emission, we will have a comprehensive network of electric vehicle charging points, and will also have transitioned a large proportion of our bus, taxi and private hire vehicles feet to zero emission vehicles.



Transport

- › **Demand reduction and modal shift** - how behavioural and societal shifts could reduce or change demand for travel;
- › **The technological options** available and the uptake of transport with low or zero emissions
- › Improvements to **fuel efficiency** in conventional vehicles.

Policies and Projects

Travel demand and Modal Shift

- Reduction of Car Journeys by 10% by 2025.
- Roads Review.
- 20MPH.
- Active Travel.
- Mode Shift to Public Transport.
- Active Travel Investment.
- Home Working and Hubs.
- Car Clubs.
- Low emission zones.

Zero Emission Transport

- ZEV Mandate.
- Make bus and Taxis fleets zero emission by 2035.
- EV Charging Programme.
- Freight and Logistics Strategy.

Fuel Efficiency

- Aviation.
- Shipping.
- Alternative Road Fuels.
- Speed reduction targets.



Llywodraeth Cymru
Welsh Government

Welsh Government

Net Zero Wales Carbon Budget 2 (2021-25)

Robin Beckmann

Head of Transport Environment and Climate Change
Welsh Government

